





**USA HEADQUARTERS**  
19315 Dickson Park Dr.  
Houston - Texas - TX 77373

**WAREHOUSE**  
1920 WW Thorne Dr.  
Houston - Texas - TX 77373  
Ph.: +1 832.515.5543

**MIDLAND TX WAREHOUSE**  
7509 W. Industrial Ave. - Suite B1  
Midland | Texas | USA TX 79706  
Ph.: +1 832.203.9643



**ARGENTINA HEADQUARTERS**  
Debenedetti 3895  
(B1636ENU) Olivos - Buenos Aires  
Ph.: +54 11 4005.5540 | 5587  
[www.duralitte.com](http://www.duralitte.com)

**CARDALES PLANT**  
Parque Ind. Ruta 6  
Ruta Prov. 6 Km. 180  
(2814) Los Cardales  
Buenos Aires

**SERVICE & LOGISTIC CENTER NEUQUÉN**  
Fiambalá 307  
(Q8304DIG) Neuquén  
Ph.: +54 299 525.9321

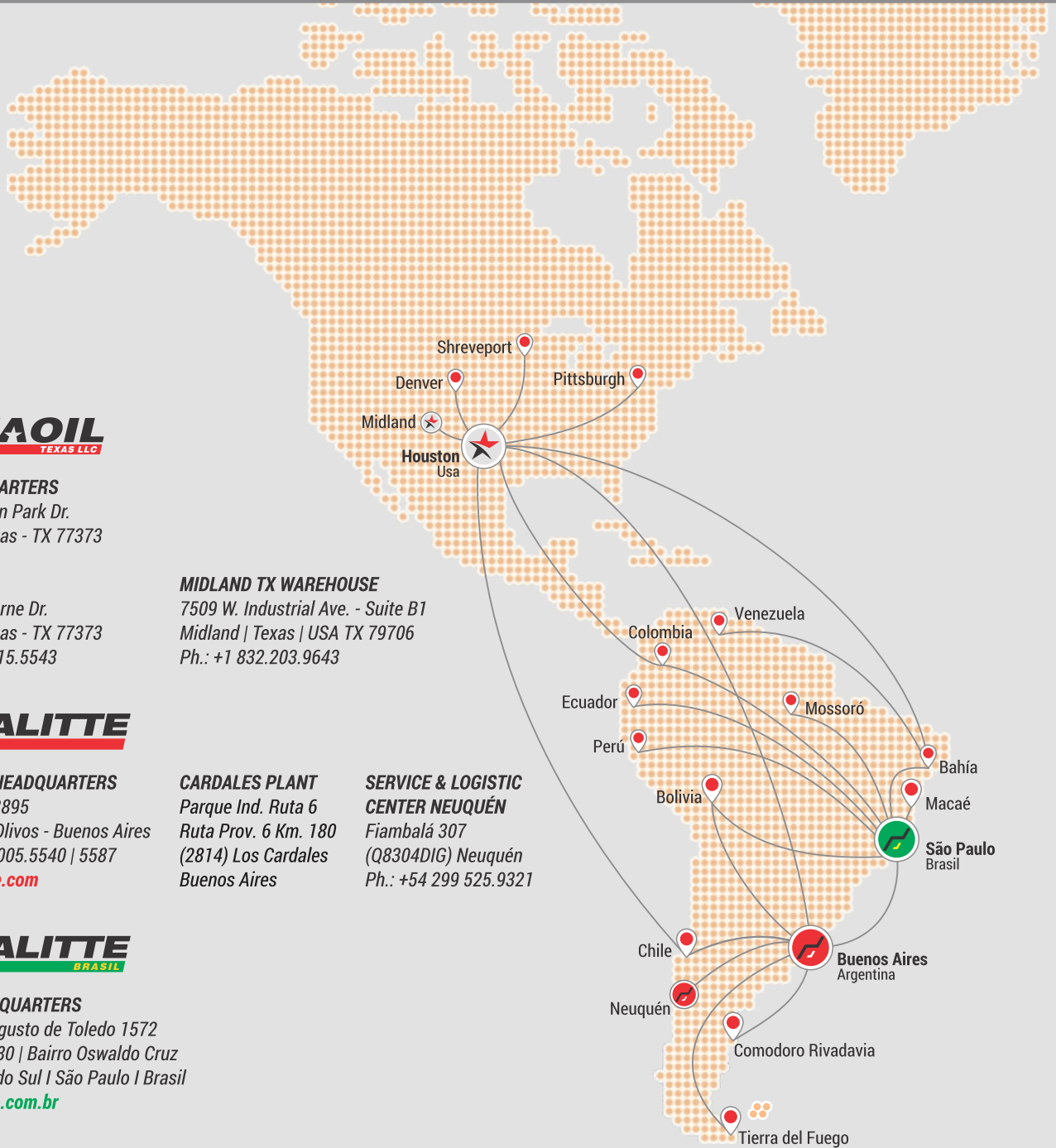


**BRAZIL HEADQUARTERS**  
Av. Doutor Augusto de Toledo 1572  
Cep: 09540-080 | Bairro Oswaldo Cruz  
São Caetano do Sul | São Paulo | Brasil  
[www.duralitte.com.br](http://www.duralitte.com.br)



**USA HEADQUARTERS**  
19315 Dickson Park Dr.  
Houston - Texas - TX 77373  
[www.duxatech.com](http://www.duxatech.com)

**WAREHOUSE**  
1920 WW Thorne Dr.  
Houston - Texas - TX 77373  
Ph.: +1 832.515.5543





A **Duralitte** Company

## Integral Solutions for the Oil and Gas Industry

Headquartered in Houston, Texas, **Duxaoil Texas LLC** (Duxaoil) is a subsidiary of the **Duralitte Group** in the US, and serves the North America, Central America, and Persian Gulf (Dubai) regions.

As a central hub for distribution and a state-of-the-art machine shop, Duxaoil provides the product lines of its parent manufacturing facilities, **Duralitte Argentina** and **Duralitte Brazil**, enabling customers access to world-class, high-quality products.

Backed by quality certifications, Duxaoil, Duralitte Argentina, and Duralitte Brazil have earned a reputation for producing products of unparalleled quality that are recognized globally.


### COMMERCIAL PARTNERS



## International Certifications



 **API 11B**  
(Licenses N°11B-0169)

**API AX**   
(Licenses N°11AX-0154)

## Introducing Our Dimensional Control and Recertification Lab Precision and Expertise at Your Service



*Duxaoil is proud to offer our very own laboratory services dedicated to dimensional control, thread certification, and attribute control equipment.*

*Our commitment to quality and precision is evident in the use of top-of-the-line **Mitutoyo** and **Gagemaker** equipment, enabling us to provide highly specialized measurements and thread control services for a diverse range of industries:*

- Oil and Gas
- Metallurgical
- Nuclear

*Additionally, we offer a full range of thread gauge rectification services, and as an **authorized distributor** for the Southern Cone of the leading companies **Gagemaker** and **PMC Lonestar**, we are confident in our ability to provide exceptional service and products to our valued customers.*

SUPPORTING COMPANIES



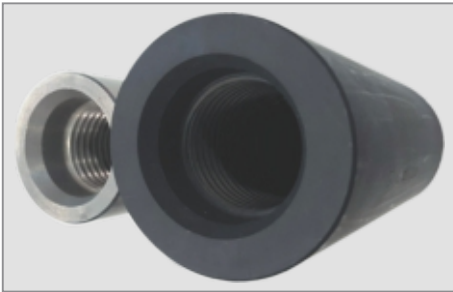
## Sucker Rod Couplings

*Duxaoil manufactures sucker rod couplings with quality materials under the requirements of API 11B.*

*The couplings are manufactured in several diameters ranging from 3/4" to 1" and in grades SM and DES according to API 11B.*

*Duxaoil uses API standard materials, CNC technology and the latest generation toolkit.*

*Each single product is controlled with certified gauges to assure dimensional attributes.*



T class				
size	class	internal finishing	external finishing	weight kg.
3/4"	T	phosphate	phosphate	0.650
7/8"	T	phosphate	phosphate	0.800
1"	T	phosphate	phosphate	0.880

**Duxaoil T class couplings** are used for services from medium to low requirements.

These couplings are made with tensile strength and fatigue resistance according to API requirements.

The couplings are produced in mills CNC lathes, with special emphasis on the surface finishing of the threads in order to increase the fatigue life by not cutting the fibers of the base material.



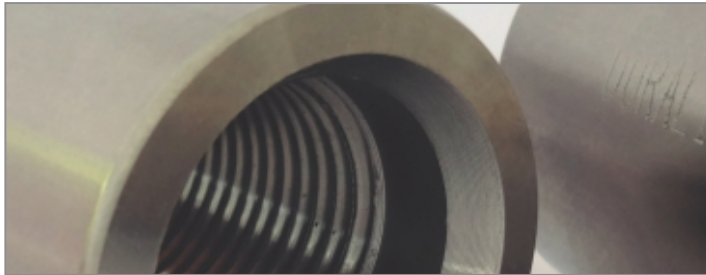
SM class					
size	class	type	internal finishing	external finishing	weight kg.
3/4"	SM	FS	phosphate	spray metal	0.650
7/8"	SM	FS	phosphate	spray metal	0.800
1"	SM	SH	phosphate	spray metal	0.880

The SM coupling was specially developed highly corrosive environments. The coupling is made with steel of class T, so that it has the same mechanical properties in terms of tensile strength and fatigue.

SM class has a nickel-chromium outer coating with a minimum thickness of 200 microns, thermally fused to the braked, confers a hardness ranging from 58 to 62 HRC, which increases wear resistance and increases corrosion resistance.

The outer surface is rectified according to API roughness values.

**stainless steel sucker rod coupling 330/331 series**

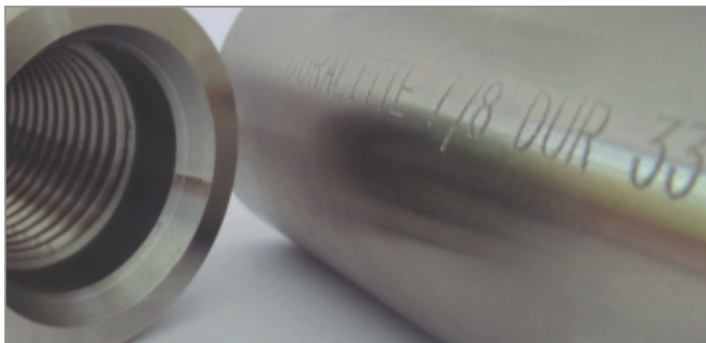


When resistance to stress-corrosion cracking is higher than efficiency of carbon steel couplings, **Duxaoil** developed *Durinox* couplings.

Couplings are manufactured with austenitic stainless steel with high levels of nickel and titanium based on AISI 321 in order to increase resistance to corrosion by chemical agents on parts under tension efforts.

**DUR 330 models**

product	size	class	type	internal finishing	external finishing	weight kg.
coupling	3/4"	T	DUR 330	phosphate	NA	0.650
coupling	7/8"	T	DUR 330	phosphate	NA	0.800
coupling	1"	T	DUR 330	phosphate	NA	0.880



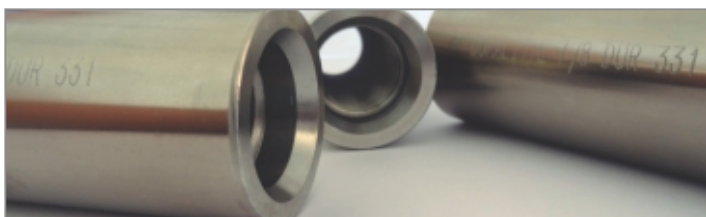
BB DUR 330 couplings are manufactured in stainless steel reaching tensile strengths values higher than 665 MPa and with a low-hardness (less than 200 Brinell) which decreases the wear of the tubing.

DUR 330 model couplings are recommended for wells under extreme corrosion conditions.

degree	minimum rupture stress		degree	minimum rupture stress	
	psi	mpa		psi	mpa
T	115.000	793	DUR 330	114.000	790

**DUR 331 models**

product	size	class	type	internal finishing	external finishing	weight kg.
coupling	3/4"	SM	DUR 331	phosphate	rectified	0.650
coupling	7/8"	SM	DUR 331	phosphate	rectified	0.800
coupling	1"	SM	DUR 331	phosphate	rectified	0.880



DUR 331 model couplings offer the same mechanical and constructive characteristics as the DUR 330 model in steel with sprayed metal application.

degree	minimum rupture stress		degree	minimum rupture stress	
	psi	mpa		psi	mpa
SM	115.000	793	DUR 331	114.000	790

### DES class

product	size	class	type	internal finishing	external finishing	weight kg.
coupling	3/4"	HD	FS	phosphate	phosphate	0.650
	7/8"	HD	FS	phosphate	phosphate	0.800
	1"	HD	SH	phosphate	phosphate	0.880

When the need of resistance exceeds the class T couplings, Duralitte has developed the DES class couplings.

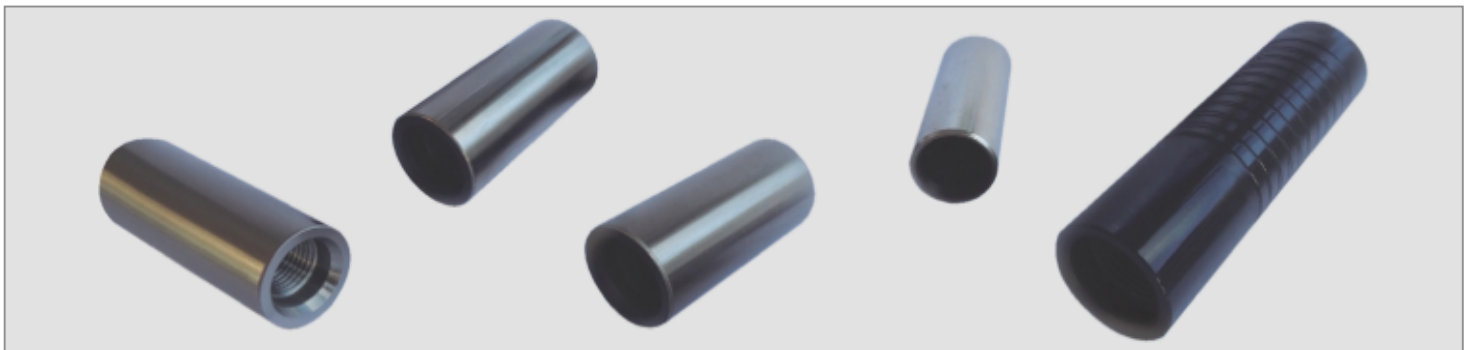
These coupling are made of special steel, to increase the fluence up to values 980 Mpa and to increase fatigue resistance.

These coupling are recommended for deep wells extraction.

### polished rod couplings

product	size	class	internal finishing	external finishing	weight kg.
coupling	1 1/4" X 1"	T	phosphate	phosphate	0.570
	1 1/4" X 1"	T	phosphate	phosphate	0.880

### sub couplings



product	size	class	type	internal finishing	external finishing	weight kg.
sub coupling	1" x 3/4"	T	SH	phosphate	phosphate	1.15
	1" x 7/8"	T	SH	phosphate	phosphate	1.10
	7/8" x 3/4"	T	FS	phosphate	phosphate	0.83
sub coupling	1" x 3/4"	HD	SH	phosphate	phosphate	1.15
	1" x 7/8"	HD	SH	phosphate	phosphate	1.10
	7/8" x 3/4"	HD	FS	phosphate	phosphate	0.83
sub coupling	1" x 3/4"	SM	SH	phosphate	spray metal	1.15
	1" x 7/8"	SM	SH	phosphate	spray metal	1.10
	7/8" x 3/4"	SM	FS	phosphate	spray metal	0.83

## Tubing & Casing Couplings

*Duxaoil manufactures couplings with seamless steel pipes under API 5CT quality standards.*

*Couplings are manufactured under requirements of tubing, casing, line pipe with diameters from 2 3/8" to 13 3/8" according to API 5CT standards.*

*For their production, Duxaoil uses CNC technology and latest generation toolkit. Every single product is controlled with certified gauges to assure dimensional attributes.*



### ISO 11960 / API 5CT

size & weight of API coupling

diameter	thread type	size (OD*L) mm	weigh Kg.
2 3/8"	NUE	73.02 x 107.95	1.28
2 3/8"	EUE	77.80 x 123.82	1.55
2 7/8"	NUE	88.90 x 130.18	2.34
2 7/8"	EUE	93.17 x 133.35	2.40
3 1/2"	NUE	107.95 x 142.88	3.71
3 1/2"	EUE	114.30 x 146.05	4.10
4"	NUE	120.65 x 146.05	4.35
4"	EUE	127.00 x 152.40	4.82
4 1/2"	NUE	132.08 x 155.58	4.89
4 1/2"	EUE	141.30 x 158.75	6.05
4 1/2"	STC	127.00 x 128.75	5.23
4 1/2"	LTC	127.00 x 177.08	4.15
4 1/2"	BTC	127.00 x 225.42	4.55
5"	STC	141.30 x 165.10	4.66
5"	LTC	141.30 x 196.85	5.75
5"	BTC	141.30 x 231.78	5.85
5 1/2"	STC	153.67 x 171.45	5.23
5 1/2"	LTC	153.67 x 203.20	6.42
5 1/2"	BTC	153.67 x 234.95	6.36
6 5/8"	STC	187.71 x 184.15	9.12
6 5/8"	LTC	187.71 x 222.25	11.34
6 5/8"	BTC	187.71 x 244.48	11.01
7"	STC	194.46 x 184.15	8.39
7"	LTC	194.46 x 228.60	10.89
7"	BTC	194.46 x 254.00	10.54
7 5/8"	STC	215.90 x 190.50	12.30
7 5/8"	LTC	215.90 x 234.95	15.63
7 5/8"	BTC	215.90 x 263.52	15.82
8 5/8"	STC	244.47 x 196.85	17.15
8 5/8"	LTC	244.47 x 196.85	17.15
8 5/8"	BTC	244.47 x 269.87	20.87
9 5/8"	STC	269.88 x 196.85	18.03
9 5/8"	LTC	269.88 x 266.70	25.45
9 5/8"	BTC	269.88 x 269.88	23.16
10 3/4"	STC	298.49 x 203.20	20.79
10 3/4"	BTC	298.49 x 269.88	25.75
11 3/4"	STC	323.85 x 203.20	22.65
11 3/4"	BTC	323.85 x 269.88	28.05
13 3/8"	STC	365.125 x 203.20	25.68
13 3/8"	BTC	365.125 x 269.88	31.79



### couplings

#### tubing

diameter	steel	thread
2 3/8"	J/K55 N/L80 P110	8RD
2 7/8"	J/K55 N/L80 P110	8RD
3 1/2"	J/K55 N/L80 P110	8RD

#### line pipe

diameter	steel	thread
2"	J55	11,5 HPP
2 1/2"	J55	8 HPP
3"	J55	8 HPP

#### casing

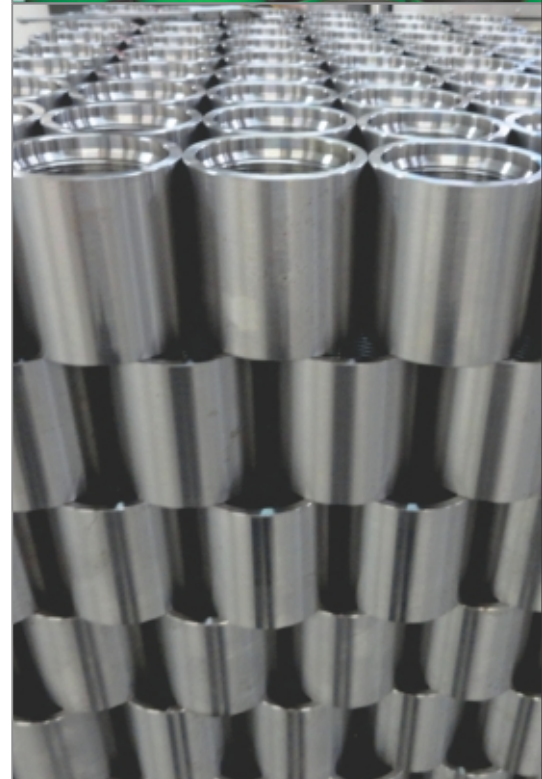
diameter	steel	thread
5 1/2"	J/K55 N/L80 P110	BTC
7"	J/K55 N/L80 P110	BTC
9 5/8"	J/K55 N/L80 P110	BTC

### mechanical properties

API grades	yield strength		tensile strength		hardness
	min PSI	max PSI	min PSI	max HRC	
J55	55.000	80.000	75.000		
K55	55.000	80.000	95.000		
N80	80.000	110.000	100.000		
L80	80.000	95.000	95.000		23
L80 9cr	80.000	95.000	95.000		23
L80 13 cr	80.000	95.000	95.000		23
P110	110.000	140.000	125.000		25,4

### size for NPT coupling

size (inch)	length W (mm)	outside diameter (mm)		thread length (mm)	
		serie 3000	serie 6000	serie 3000	serie 6000
1/4"	35	19	25	8.1	10.2
3/8"	38	22	32	9.1	10.4
1/2"	48	28	38	10.9	13.6
3/4"	51	35	44	12.7	13.9
1"	60	44	57	14.7	17.3
1 1/4"	67	57	64	17.0	18.0
1 1/2"	79	64	76	17.8	18.4
2"	86	76	95	19.0	19.2
2 1/2"	92	92	108	23.6	28.9
3"	108	108	127	25.9	30.5
4"	121	140	159	27.7	33.0

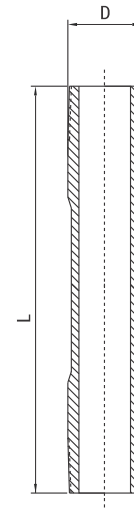


## Pup Joints

*Duxaoil manufactures pup joint products with seamless steel pipes in J55 and N80 material grades according to API specs 5CT.*

*EUE pup joints are manufactured in nominal diameters of 2" and 4 1/2" with a variety of lengths ranging from 1 to 12 feet and under API 5CT standards.*

*For their production, Duxaoil uses raw material according to API 5CT standards, using CNC technology and the latest generation of toolkits. Every part is rigorously examined and tested under the most extreme working conditions.*



diameter D (inch)	long L (feet)	steel
2 3/8"	2	J55 / N80
2 3/8"	4	J55 / N80
2 3/8"	6	J55 / N80
2 3/8"	8	J55 / N80
2 3/8"	10	J55 / N80
2 3/8"	12	J55 / N80

diameter D (inch)	long L (feet)	steel
2 7/8"	2	J55 / N80
2 7/8"	4	J55 / N80
2 7/8"	6	J55 / N80
2 7/8"	8	J55 / N80
2 7/8"	10	J55 / N80
2 7/8"	12	J55 / N80

diameter D (inch)	long L (feet)	steel
3 1/2"	2	J55 / N80
3 1/2"	4	J55 / N80
3 1/2"	6	J55 / N80
3 1/2"	8	J55 / N80
3 1/2"	10	J55 / N80
3 1/2"	12	J55 / N80



### size for tubing round thread eue

size (inch)	OD (inch)	N° of thread form	effective thread length (inch)	hand position adjustment (inch)	minimun length of full thread (inch)
2 3/8"	2.594	8	1.703	2	0.938
2 7/8"	3.094	8	1.890	2	1.125
3 1/2"	3.750	8	2.140	2	1.375

### size for tubing round thread nu

size (inch)	OD (inch)	N° of thread form	effective thread length (inch)	hand position adjustment (inch)	minimun length of full thread (inch)
2 3/8"	2.375	10	1.456	2	0.725
2 7/8"	2.875	10	1.894	2	1.163
3 1/2"	3.500	10	2.144	2	1.413
4 1/2"	4.500	8	2.328	2	1.563

### dimensiones / size / dimensões

size (inch/mm.)	nominal weight		grade	recommended torque lb/ft					
	non upset lb/ft	exter. upset lb/ft		non upset lb/ft			exter. upset lb/ft		
				min	opt	max	min	opt	max
2 3/8" / 60.3 mm	4.60	4.70	J-55	550	730	910	970	1290	1610
	4.60	4.70	N-80	770	1020	1350	1350	1800	2250
2 7/8" / 73.0 mm	6.40	6.50	J-55	790	1050	1310	1240	1650	2060
	6.40	6.50	N-80	1100	1470	1840	1730	2300	2880
3 1/2" - 88.9 mm	9.20	9.30	J-55	1110	1480	1850	1710	2280	2850
	9.20	9.30	L-80	1520	2030	2540	2270	3030	3790
	9'20	9.30	N-80	1550	2070	2590	2400	3200	4000

min. (minimum) | opt. (optimum) | max. (maximum)

## Rotary Shouldered Subs

Duxaoil produces saver subs according to API 7-1/7-2 DS-1 standard. They are used as reductions or fusible component to extend the life of the drill stem or top drive unit and the rest of the drill string. Available models with PIN-BOX, BOX-BOX, PIN-PIN.

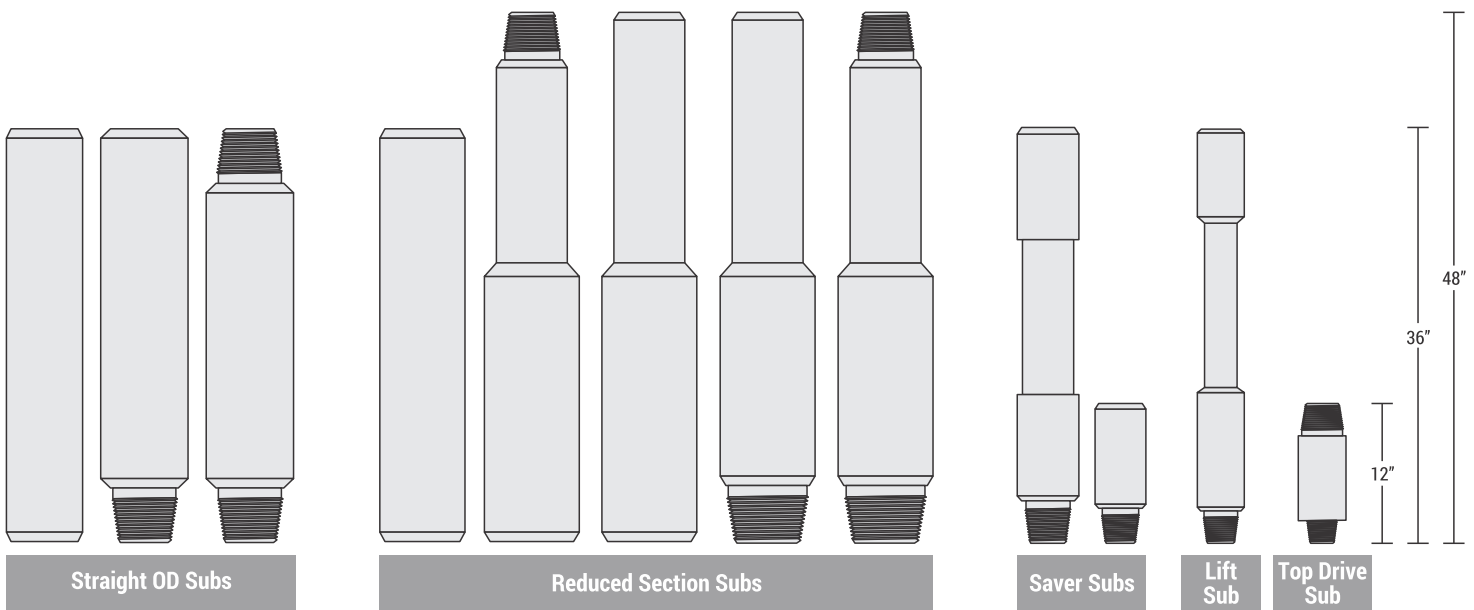
The subs connections are provided with a phosphate surface coating. All connections are machined in steels according to API standard in the latest CNC technology, controlled with certified gauges Gagemaker/PMC.



### Technical Characteristics

Made with AISI 41XX materials and treatments according API 7-1/7-2 - DS1. Mechanical properties that support up to 120,000 psi yield strength. Precision machining API standard connections in lengths from 2" to 48" and forms according to customer request.

Serially numbered to ensure traceability of the finished product. Special developments are available for production.



### available connections

API NC	23-26-31-35-38-40-44-46-50	FULL HOLE	4"
DOUBLE STREAMLINE	3 1/2" - 4" - 4 1/2" - 5 1/2"	INTERNAL FLUSH	2 3/8" - 2 7/8" - 3 1/2" - 4" - 4 1/2"
EXTERNAL FLUSH	3 1/2" - 4 1/2"	SLIM HOLE	2 3/8" - 2 7/8" - 3 1/2" - 4" - 4 1/2"
		XTRA HOLE	2 3/8" - 3 1/2" - 4 1/2" - 5"

## XO Crossovers



*Duxaoil manufactures forged adapters and crossovers, utilizing high quality steel. These are built with integral threaded and welded ends.*

*Crossovers for casing in all possible size combinations used in oilfield applications are also produced.*

### xo crossover size

size	long W	outer diameter		grade
		OD1 (mm)	OD2 (mm)	
5 1/2" x 2"	305	139.7	60.3	J55
5 1/2" x 2 7/8"	305	139.7	78.58	J55
5 1/2" x 3 1/2"	305	139.7	95.25	J55
7" x 2"	305	177.8	60.3	J55
7" x 2 7/8"	305	177.8	78.58	J55
7" x 3 1/2"	305	177.8	95.25	J55
7" x 5 1/2"	305	177.8	139.7	J55
9 5/8" x 5 1/2"	305	244.5	139.7	J55
9 5/8" x 7"	305	244.5	177.8	J55

## Blast joint



*The blast joint is used to protect the tubing string against the "gas jet" abrasive effect when positioned in front of the perforations.*

*Duxaoil blast joint are made of two steel types:*

- 1. Integrally, p110 steel threaded male/female.*
- 2. N80 steel with sprayed metal protection threaded male/male with coupling.*

*Lengths available in 2,4, 6, 8, 10, 12 and 20 feet.*

### size of API blast joint

diameter	size (ODxL) mm	thread type	weight (kg)
2 3/8"	3.063/77.8 x 1.995/50.7	EUE MxF	4.6
2 7/8"	3.662/93.2 x 2.441/62	EUE MxF	6.5
3 1/2"	4.5/114.3 x 2.992/76	EUE MxF	9.3

## Customized Machining Solutions: Precision Parts Tailored to Your Need

*Duxaoil Texas LLC offers customized machining services tailored to your unique needs. Our state-of-the-art machinery and experienced team of machinists allow us to provide precision machining solutions for a wide range of industries.*

*From small parts to medium-sized components, we have the capability to create customized parts to your exact specifications. Our team will work with you to understand your needs and requirements, and develop a customized solution that meets your specific needs.*



### ***Our range of custom machining capabilities includes but is not limited to:***

- **Turning:** We have the ability to turn parts up to 14 inches in diameter and up to 48 inches in length.
- **Drilling and Tapping:** We can drill and tap holes in a wide range of sizes and materials.
- **Threading:** We offer threading capabilities with both single-point threading and cold rolling processes, providing you with a range of options for creating threaded components for the oil and gas.

- **Saw Cutting:** We offer saw-cutting capabilities for different materials allowing us to create precise cuts for your custom parts.
- **Part Marking:** We can provide laser part marking services to label your parts with part numbers, logos, or other identifying information as needed.
- **Prototyping:** We offer prototyping services to help you develop and test your designs before moving to production. Our team can work with you to refine your designs and create physical sample versions for testing and improvement.

*We can provide feedback on design improvements and work with you to ensure that your final product meets your exact needs. We also offer 3D printing capabilities, allowing us to create functional prototypes quickly and efficiently.*

*Our goal is to provide our customers with high-quality, customized parts that meet their specific needs.*

*We are committed to providing excellent customer service and delivering projects on time and within budget.*

*Contact us today to discuss your customized machining needs and to learn more about how our team can help bring your project to life.*





**USA HEADQUARTERS**

19315 Dickson Park Dr.  
Houston - Texas - TX 77373

**WAREHOUSE**

1920 WW Thorne Dr.  
Houston - Texas - TX 77373  
Ph.: +1 832.515.5543  
[www.duxaoil.com](http://www.duxaoil.com)

**MIDLAND TX WAREHOUSE**

7509 W. Industrial Ave. - Suite B1  
Midland | Texas | USA TX 79706  
Ph.: +1 832.203.9643



**API Certifications**  
Licenses:  
Nº11B-0169 | 11AX-0154



[instagram.com/  
duxaoiltexas](https://www.instagram.com/duxaoiltexas)



[linkedin.com/  
company/duxaoiltexas](https://www.linkedin.com/company/duxaoiltexas)



Youtube Channel  
Duralitte S.A.

[info@duxaoil.com](mailto:info@duxaoil.com)  
[www.duxaoil.com](http://www.duxaoil.com)



**ARGENTINA HEADQUARTERS**

Debenedetti 3895  
(B1636ENU) Olivos - Buenos Aires  
Ph.: +54 11 4005.5540 | 5587  
[www.duralitte.com](http://www.duralitte.com)

**CARDALES PLANT**

Parque Ind. Ruta 6  
Ruta Prov. 6 Km. 180  
(2814) Los Cardales  
Buenos Aires

**SERVICE & LOGISTIC  
CENTER NEUQUÉN**

Fiambalá 307  
(Q8304DIG) Neuquén  
Ph.: +54 299 525.9321



**BRAZIL HEADQUARTERS**

Av. Doutor Augusto de Toledo 1572  
Cep: 09540-080 | Bairro Oswaldo Cruz  
São Caetano do Sul | São Paulo | Brasil  
[www.duralitte.com.br](http://www.duralitte.com.br)



**USA HEADQUARTERS**

19315 Dickson Park Dr.  
Houston - Texas - TX 77373  
[www.duxatech.com](http://www.duxatech.com)

**WAREHOUSE**

1920 WW Thorne Dr.  
Houston - Texas - TX 77373  
Ph.: +1 832.515.5543